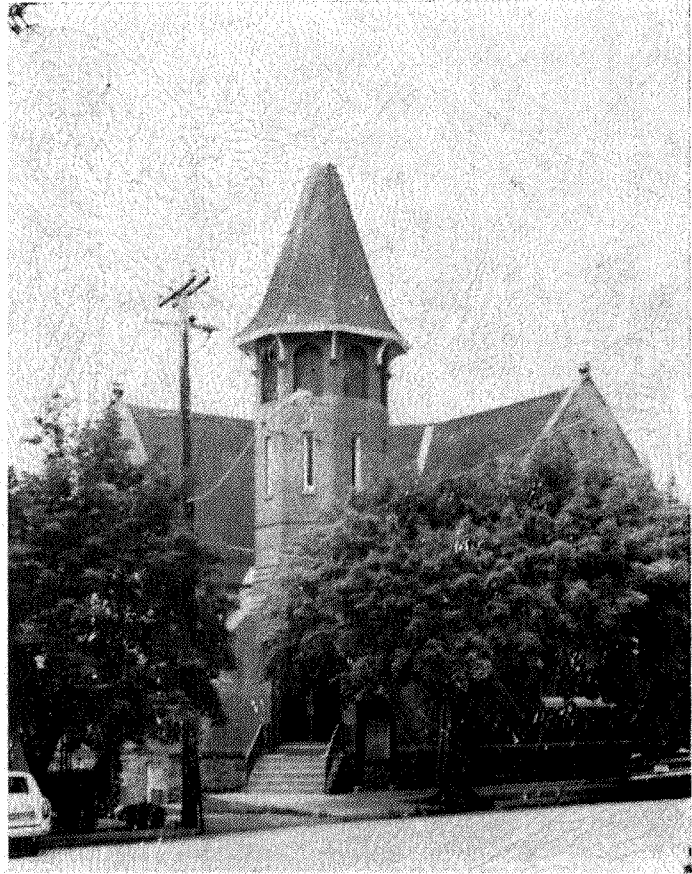


100th Anniversary



*St. Paul's Chapel
Christ's United
Lutheran Church*

Gordon, Pa.

1876

—

1976

FOREWORD

9/16/1976

Dear Friends:

Celebrations of the nature we are now observing come once in a lifetime, and we like to recount the steps as we view our friendships, our trials and pleasures, as they occur not only in ourselves, but with all with whom we come in contact.

ST. PAULS has been blest with many pleasant events, and we are indeed thankful to Almighty God that we have been lead all the way.

At times we may have felt forsaken when we have seen entire families leave our community, our usual every day lives disrupted, and the visions of growth passing by as a dream.

However, our Church and our community have weathered the storm, and while our town is not covered with "Engine Smoke" anymore, we feel that the community has been covered with a kindness toward our fellowman, and a desire to bring into perspective the things that have been so graciously placed within our reach.

New families have joined our Church and Community, progress is noted in new homes and business establishments, which have been erected to add to the progress of the area, and a general feeling of advancement is apparent.

We are pleased that so many of our people have been privileged to attend this affair, and as we talk of olden times, let us catch a vision of the brightness that is before us.

We welcome you, and as we proceed into the future, we believe that everyone will be pleased to have participated in the joy that has been accorded us.



Pastors Mark Fritch, Jimmy Werley, Charles Mertz

PASTOR'S MESSAGE

Brothers and Sisters in Christ,

The greatest love we know is from our God in Jesus Christ. St. Paul's Centennial Anniversary is a celebration of that love. It is a marriage feast with Christ as the Bridegroom. His dowry for us is the gift of faith, through which we know Him fully in a life together in love. This anniversary commemorates our family's life and union with God.

No one wishes to go to a wedding feast empty-handed. It is a time for joy, celebration, expressions of love, gratitude and good wishes. We join the family of St. Paul's Chapel in observing and celebrating our relationship with God begun in faith, preserved in love and still growing in grace. Let us all bring to the marriage union our resources and gifts to exalt the Church in generations to come, and to provide God's Word and Sacraments as a dowry for our children's union in a responsible life together with Christ.

After all, that is the heritage we have received and it is the hope of the Church in every age to be a living witness, even as St. Paul the Apostle spread the Good News to establish God's Kingdom. This hope of the Church is voiced in these words from, 'That Man May Live.'

"It is not the form that brings us together,

It is not a piece of paper on which we wrote words,

It is not a common song or a common pledge.

It is the One who led us,

The One who seeks man,

The One who became man

To show us the way."

St. Paul's Centennial anniversary coincides with our nation's bi-centennial observance. In both events, reviewing the past can bring appreciation for what our ancestors in the faith made possible for us and impress on us our responsibility to future generations. We bring alive the history of the chapel in our worship, our family life, our community spirit. May we bring to life a true wedding feast celebrating our faith, love, and gratitude for Christ's presence in our homes and in our church.

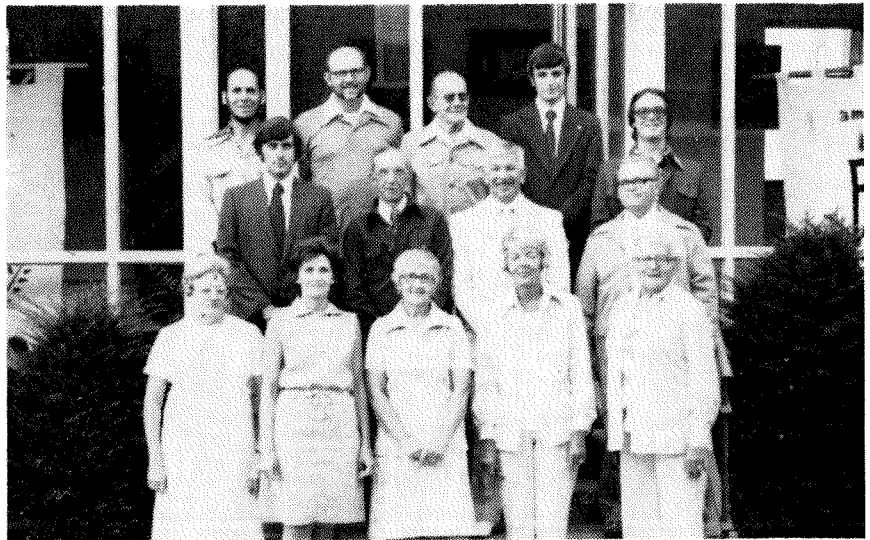
Yours in Christ,

THE PASTORS

JIMMY LEE WERLEY

MARK A. FRITCH

CHARLES E. MERTZ



CHURCH COUNCIL AND TRUSTEES

Members — left to right, front — Margaret McAndrew, Margaret Knock, Marian Brennan, Lois Shuttlesworth, Elizabeth Hubler. Second row — John Denchak, James Reiner, Robert Yarnell, Lloyd Wolfgang. Third Row — Calvin Cook, Ronald Savers, Jacob Bingaman, Richard Fritz, Jr., John Mertz.

The governing body of a Lutheran congregation is its Church Council. The Church Council is made up of confirmed members of the congregation who are elected at the annual congregational meeting in January. Church Council has always played an important part in nurturing the spiritual life of our congregation and taking care of the physical plant.

Our congregation, Christ's United, enjoys a unique Church Council setup. Each chapel is represented according to the percentage of its enrollment.

St. Paul's is represented by four members.

Members — Edward Scheele, Carl Johnson, Kay Weidensaul, Myra Green, Linda Llewellyn missing from picture

Also assisting in the governing of our chapel is its Trustees. This group of chapel members take care of the local administration needs. They are responsible for maintenance of our building, supervision of Church School, and the development of our local programs. This group works hard to keep our chapel growing and to continue our work for the Lord.

HISTORY OF GORDON

Gordon, once an important railway town, was settled and developed because of its anthracite coal interests. In the early days this tract of wilderness located in a beautiful valley at the foot of the Broad Mountain was part of Butler Township. It was crossed from southeast to northwest by the old "Centre Turnpike" which extended from Sunbury to Pottsville and Reading.

In the early 1800's, Colonel Wyncoop, an officer returning from the Mexican War, settled on a strip of land extending from the now Portner property to the site of the Public School. This settlement he named Perote, after the site of the final battle in which he fought.

Other tracts of land in this area, according to a draft dated March 24, 1788, had come into the possession of the McKnight Family of Reading. Descendents of the McKnights moved to the area and founded the town of Gordon named by them after Judge Gordon of Reading to whom they gave a lot. This was the first deed ever recorded to cover a real estate sale in this area.

Little was done to the valley until 1846 when William Stevenson built a steam saw mill at a point below the site of the village known on the old maps as Mt. Hope. He is also credited with building a new road which became the principal street of the village, Biddle Street, named after Nicholas Biddle, a colored man, and the first man to shed blood in the Civil War. Mr. Biddle had been a slave to a member of the First Defenders of Pottsville.

Many years later the streets of Hobart and McKnight were laid out and cleared due to the efforts of two women, one a Mrs. Troutman. They supplied money to have workers clear the woods and even helped with hatchet and saws themselves.

A second mill was built and for years these mills were the only source of employment until the building of Mine Hill, the Schuylkill Haven Railroad, and the building of the planes attracted many settlers to Gordon.

The planes which were destined to make Gordon an important little town, were completed in 1855. The purpose of the plane was to hoist cars of coal over the Broad Mountain to Schuylkill Haven where it would be loaded into boats on the Schuylkill River and shipped to Reading and Philadelphia via the Schuylkill Canal. The coal cars were first hoisted up the plane by forty mules but in 1867, an important date in the history of Gordon, everyone turned out to watch the first

locomotive puff its way into town and into the hearts of the residents of Gordon.

The Gordon Plane was the mechanical wonder of the vicinity lifting from 1500 to 2000 cars of coal daily over the mountains. Sometime in the late 1890's a section of the planes burned and was later abandoned when a new means of hoisting and shipping coal over Mahanoy Plane was discovered.

Gordon divorced itself from Butler Township in 1891, when the citizens felt they could handle their own affairs and petitioned the court to become a separate borough.

The roundhouse, the shops, the coal dirt and train whistles are now only a memory in the minds of the residents of this once important railway town. However this little town held a bright promise of progress and new opportunities for many people and they were not content to sit back and live on memories. Today Gordon can boast proudly of its industrial, commercial, and residential structures which have increased rapidly over the past 10 years. Approximately 25 new homes have been built along with a branch bank, a lumber pre-fabrication plant, a laundromat and car wash, a housing construction company, two apartment buildings, and three beauty parlors. Other services and employment are provided to area residents by two garages, a machine shop, a dress factory, two grocery stores, a car dealership, a dairy, a welding shop, a newspaper agency, a barber shop, a sporting goods store, a woodcraft shop, two appliance agencies, a doctor, a plumber, a post office, a venetian blind company, and an antique shop. Gordon also still supports three churches and a fire company equipped with the most modern fire-fighting apparatus in the area, housed in a new municipal building.

POPULATION FIGURES OF GORDON

YEAR	POPULATION
1970	874
1960	888
1950	1039
1940	1062
1930	1069
1920	1078
1910	1185
1900	1165
1890	1194
1880	753

HISTORY OF ST. PAUL'S LUTHERAN CHURCH

PRESENT INTERIOR OF CHURCH



Early Worship

The first religious worship in Gordon took place about 1854 in the school house at the edge of the village. Rev. Joseph Adams of the Northumberland Presbytery preached at this location every two weeks for several years. A number of Methodist families also lived in the village at this time and together with the Presbyterians they organized a successful Union Sunday School in the same schoolhouse.

The first Methodist preaching was by Rev. J. A. Moyer of the Catawissa circuit of the Baltimore Conference in 1857. A Methodist Society was organized in 1859, and worship services were alternated with the Presbyterians now being served by Rev. Robert C. Bryson of Ashland.

These services were held in a new school building built to accomodate the increased number of children in the village. The Methodists were served by various preachers from the area, among them Revs. Kester, Stevens, Cathers, Bickerton, McKee, Mullen, McWilliams, Shields, Triggilis, and Drake.

It was during the pastorate of Rev. Bryson that the citizens decided to build a church edifice. A vote was taken to determine which denomination would have the choice of the building. At this time the Presbyterians outnumbered the Methodists and in 1860 they built their church for a cost of \$2,500. The church was located next to the new schoolhouse on a lot presented by the McKnight family.

A decrease in membership forced the Presbyterians to sell the building to the growing number of Methodists at a cost of \$1,300. During the next four years they were served by three pastors, Revs. Satchell, Bawden, and Sampson.

The Lutheran Congregation Organized

During the late 1860's several Lutheran families moved into the village. They, with the remaining Presbyterians, were served by Revs. Sikes, Curtis, and Hackenberg of the Lutheran Church in Ashland, and an Episcopalian minister named Washburnes. This small group of families gathered together on September 3, 1876 and organized the English Evangelical Lutheran Church of Gordon, Pa. The new congregation was connected with St. James' Lutheran Church in Ashland, and Rev. O. D. S. Marclely served as pastor. Joseph L. Harper was chosen Secretary and Alexander Kaufman Assistant Secretary. The first roll lists 62 members, and the first communion roll contains 72 names. Seven members were elected as members of the governing Council with Bro. William H. Anthony recognized as Chairman.

On April 29, 1877 the new congregation voted to purchase the Methodist building for \$600. The building was transferred in June and repairs were made for \$148.70. During Rev. Marclely's pastorate an official was excommunicated for use of profane language. The first pastor left in March 1878. He was so highly thought of that the congregation sponsored a window in St. James Church in memory of their first pastor.

ORIGINAL CHURCH BUILDING BUILT 1860
DESTROYED BY FIRE 1890



More repairs were made to the building in 1878 during the pastorate of Rev. D. E. Rupley. A bell was purchased, a fence erected, and the interior and exterior of the building was painted. A fair was held at Christmas and the Treasurer reported a balance of \$142.11 at the close of the year.

In 1879 Rev. J. H. Weber, D.D., was called as pastor of the joint parish. His revival services sparked many members of the community, and the new congregation began to grow. An organ was purchased for the church in 1880 for \$250. Extensive alterations were made to the building in 1882 including: removal of the gallery, installation of stained-glass windows, papering of interior of sanctuary, new pulpit furniture, altar rail and chandelier, and painting exterior of the building.

The Congregation Incorporated

The year 1885 is perhaps the most important in the congregations' history. In June talk began of separating from the Ashland Church. Work began in securing a parsonage for a new pastor and in October a joint council meeting was held. It was agreed at this meeting that a separation should take place no later than July 1, 1886. In November 1885 the congregation was incorporated as St. Paul's Evangelical Lutheran Church, of Gordon, Pa. The charter was granted on December 7, 1885.

Rev. Weber closed his ministry on February 28, 1886 with a communion service and the addition of seven members. His dedication to the Lord is evident in the fact that he started with 42 members and left with 106. He was succeeded by W. Gardner Thrall of South Valley, N.Y. who was the first pastor called exclusively by St. Paul's. He was offered \$40 a month plus parsonage. He arrived March 1, 1886 and was installed October 17. It was during Rev. Thrall's pastorate that both morning and evening Sunday services were held. It was also during his pastorate that the Lutheran Sunday School was organized. A Union Sunday School had been organized as early as 1876, but being a true Lutheran, Rev. Thrall thought it best that the Lutherans support their own Sabbath School. In 1887 just before Rev. Thrall left St. Paul's it was voted at the annual session of the Lebanon Conference to join Gordon with the Lutheran congregation in Port Carbon. This however never came about.

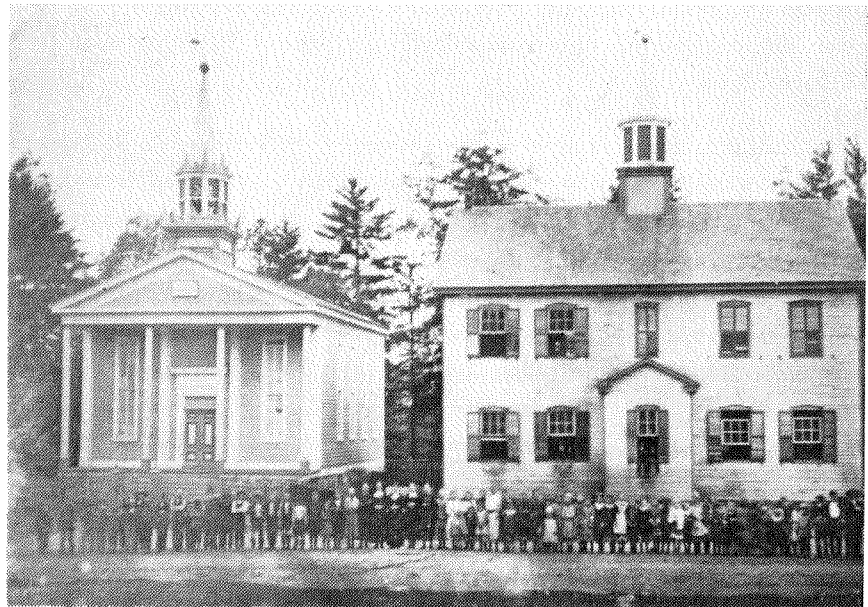
St. Paul's Gets A New Building

Disaster occurred during the pastorate of Rev. C. M. Sandt. On March 28, 1890 an overheated stove started a fire in the schoolhouse. Both the schoolhouse and the church were lost, but several articles

were saved from the church. A true disaster, but one of the mysterious ways in which the Lord works. Such a tragedy would make anyone disappointed, but the members would not be defeated. The church council met within twenty-four hours to discuss plans for a new building. They leased the P. O. S. of A. hall to hold services and erected a pavilion on the church lot to hold festivals to raise money. The council accepted a bid of \$3,500 and agreed building costs should not exceed \$5,500. The actual cost went as high as \$10,000. The cornerstone was laid October 5, 1890 only six months after the fire. The building was dedicated a year later on September 27, 1891.

The church was built on the old church lot, with the school opposite to where the old school had been. The new sanctuary was of brick construction and unique design. It had a seating capacity of 350 with a Sunday School in the basement.

We hear much today about shoddy construction, but this seems to be an old problem. Several defects were found in the new building, particularly a leaky roof and a defective heating system. The original furnace was insufficient and a second one had to be put in the building. The church was almost the victim of a second fire as the flooring around the heating pipe caught fire. Early discovery by neighbors prevented any serious damage.



ORIGINAL CHURCH AND SCHOOL

The last indebtedness on the beautiful Church was paid off while Rev. P. E. Bierbauer was pastor. A mortgage burning celebration was held during a special thanksgiving service on April 16, 1903. The following year on April 24 a pipe organ was dedicated. One half of the \$1,200 cost was donated by Andrew Carnegie.

In 1892 Pastor A. R. Glaze reported a membership of 130, with 150 Sunday School scholars. It was around this time there was talk of merging with the Lutheran congregation in Shenandoah, but again nothing resulted. Nothing extraordinary happened during the term of Rev. G. E. Hipsley, but there must have been apprehension when the Gordon Planes, the main industry of the village, were closed.

A Decade Of Improvements

Rev. E. E. Schantz, St. Paul's ninth pastor, records disappointment when he came to Gordon, attendance was poor and there was no suitable housing. Later he was able to say that things improved, new members were added, service attendance increased, and a parsonage was purchased on Hobart Street. In 1907 extensive repairs were made to both the parsonage and church building. The following year another interest-bearing note was burned and again St. Paul's was free of debt.

Gaslights were installed in the church in 1909, while C. R. Meyers was pastor and the following year a resolution was passed forbidding the holding of money-making enterprises in the House of God. In Easter that year 197 persons were communed breaking all previous records. A Thirty-fifth Anniversary was held in 1911 accompanied by several weeks of evangelistic services during the pastorate of Paul Froehlich. One outcome being the decision of Ralph Wagner to enter the ministry. Ralph was the first son of the congregation to pursue the career of pastor.

A two-story brick annex was added to the church in 1913, directed by Rev. George W. Styer, and in 1916 a new heating plant was installed. Several years later an electric fan blower was installed for the pipe organ and the gaslights in the church and parsonage were replaced with electric lights as suggested by Rev. G. W. Miller.

The Longest Pastorate

The longest pastorate of St. Paul's began February 5, 1922 and ended October 1, 1951 the close of the Seventy-fifth Anniversary celebration. During the thirty years that Arthur C. Harris was pastor many things happened. The membership reached a peak of 320 in 1931. A new parsonage was built close to the church, and another addition was made to the building consisting of boiler-room, kitchen, and Young Adult Bible Class Room. A marble baptismal fount was received and an outside bulletin board erected. The greatest number of improvements came in 1946. The sanctuary was remodeled, with the stage area closed off, an organ installed, and new lighting put in. The chancel was remodeled with a beautiful altar window and new altar furniture. A tower system and new carpet were added the following year.

Other important events also happened during Pastor Harris' time at St. Paul's. A Daily Vacation Church School was organized. Still operating today it is the oldest Vacation Church School in Schuylkill County. In 1932 Adam Bingaman was graduated from seminary and became St. Paul's second son to enter the ministry. In 1938 Mrs. Arvella Hubler, the last charter member of St. Paul's died 62 years after the congregation was organized. Pastor Harris was elected Pastor Emeritus and returned many times during his retirement, each time drawing a large attendance for his services.

A Time Of Decision

The 1950's were good years for St. Paul's as they were for many churches. During the pastorates of Rev. James Ziegenfuss and Rev. George Spieker the congregation remained stable and made small improvements to the building. The 1960's however proved to be a near disaster. The Reading Railroad closed its shops, the main industry of the borough. The town's population went as low as 800, the lowest population since 1880. Many members of the congregation were forced to leave town to find employment. The congregation was able to continue, but by 1965 things looked dim. A Ninetieth Anniversary Celebration was held in September 1966 and several months later John A. Swavely resigned as Pastor.

It was a time of decision, something had to be done. In October

1967, much to the dismay of many members, the congregation voted to join the Ashland Area Lutheran Parish. The parish was made up of Zion's, Girardville, with whom St. Paul's had been sharing Pastor Swavely; Good Shepherd, Ashland; St. Peter's, Lavelle; and St. John's, Ashland R. D. 1. The parish was served by Rev. Robert Hughes and a seminary intern. This set-up proved to be helpful and the following year these congregations voted to merge. In January 1969 we were joined together as Christ's United Lutheran Church of Schuylkill County. Rev. Robert Hughes and Donald Henderschedt were the first pastors.

The decision to cooperate with other Lutherans in the area proved to be a wise one. We have enjoyed the service of two pastors and an intern, and have been able to rebuild.

Postscript

The congregations membership has changed very little, but many improvements have been made. Attendance at worship has improved some, and the members have responded well financially. Since we have joined Christ's United the following material improvements have been made. The sanctuary has been carpeted, kneelers have been installed and carpeted, aluminum and glass doors have replaced the old wooden doors. A public address system was installed, and new communion ware purchased. The chancel area and bulletin board are illuminated each night for passersby to see. Also the primary rooms were painted, carpeted, and new tables and chairs have been added.

In 1967 there was talk of having to close the church doors and disband the congregation. Today we talk of new ways to further improve our worship attendance and our service to God and His people. We started with 62 members, today we have 226, but in these one hundred years we have contributed much to the work of the Lord. We are now served by Rev. Charles Mertz and Rev. Mark Fritch, and with God's help we expect Wayne Kaufman to graduate from seminary in May 1977 and be our third son to enter the ministry.

As we enter into our second hundred years it is essential that we continue to reach out to help others and further spread the Word of God. We must continue to increase our worship attendance and serve Him who has been with us through all time.

CHURCH COUNCIL MEMBERS — 1876-1976

Thos. Rasbridge	1876	Mervin Kahn	1915
Wm. F. Anthony	1876	C. M. Kehler	1916
Geo. F. Reick	1876	Charles A. Maurer	1917
Chas. F. Hoffman	1876	John G. Moyer	1920
Jos. L. Harper	1876	R. E. Martz	1921
Edw. G. Ebling	1876	Geo. E. Trommetter	1921
Frederick Rice	1876	D. W. Allvord	1926
Boaz Dreher	1877	H. E. Schrepple	1934
Martin Sager	1878	H. S. Love	1933
John Miles	1879	Lloyd Dornsife	1933
Milton E. Kantner	1881	Alfred Burmeister	1938
Thos. Miles	1881	Harry S. Evely	1940
Wm. J. Pounder	1882	Russell Troutman	1940
Wm. F. Wilson	1883	Norman Stitzer	1940
David Slanker	1883	Roy Hadesty	1942
F. E. Dreher	1883	Warren Hoffman	1943
Frederick Boltz	1885	Celester Maurer	1944
A. J. Wagner	1885	Wm. Evely, Jr.	1945
Geo. Shutt	1886	Lewis Kaufman	1945
Daniel Strum	1887	John F. Lewis	1946
Anthony Proud	1887	Robert Wolfgang	1953
Wm. E. Wagner	1890	Harry Martz	1953
Jos. H. Pounder	1890	Malcolm Boyer	1955
Wm. H. Mason	1893	Roy Dornsife	1956
R. C. Dornsife	1894	Elizabeth H. Hubler	1957
Geo. Dornsife	1895	Ruth T. Amend	1957
Jacob Trommetter	1896	John L. Stitzer	1957
Wm. Marsh	1899	Bill Sell, Jr.	1960
W. O. Seitzinger	1899	Robert Rhoades	1961
L. B. Kachel	1900	Charles Wagner	1961
John Dornsife	1906	Charles Umlauf	1962
Guy G. Hubler	1908	Rodman Bingamen	1963
Nathan Gable	1908	June Kaufman	1963
Wm. Gable	1911	Harry Burger	1966
Albert Angle	1911	Jacob Bingamen	1966
Geo. E. Slanker	1913	Dorothy Moyer	1967

* Council Since Jointure Began

*George Kaufman	1971	*John Denchak	1975
*Marie Korn	1972	*John Mertz	1975
*Bill Coward, Jr.	1973		

MOVIE NIGHT

FRIDAY, SEPTEMBER 17, 1976

7:30 P.M.

Movies, slides, and photographs of St. Paul's will be shown.

Old bulletins and other interesting items will also be displayed.

Refreshments will be served

P R O G R A M

ST. PAUL'S CHAPEL

CHRISTS UNITED LUTHERAN CHURCH

100TH ANNIVERSARY BANQUET

GORDON MUNICIPAL BUILDING

SEPTEMBER 19, 1976

6:00 P.M.

Welcome ----- Miss Elizabeth Hubler

Invocation ----- Pastor Mark Fritch

Dinner

Entertainment

Introduction of Guests

Lord's Prayer

Benediction ----- Pastor Jimmy Lee Werley

CHURCH SERVICE

ST. PAUL'S CHAPEL

CHRIST'S UNITED LUTHERAN CHURCH

C E N T E N N I A L

THE SERVICE — SEPTEMBER 19, 1976

4:00 P.M.

Prelude

Hymn 150—"A Mighty Fortress is our God"

The Confession, page 15

The Psalmody: Psalm 48, page 180

The Kyrie, page 18

The Gloria in Excelsis Deo, page 19

The Collect

The First Lesson: Deuteronomy 4:1-2, 6-8

Hymn 151—"Built On A Rock"

The Second Lesson: James 1:17-27

The Gradual

The Holy Gospel: Matthew 6:25-33

The Apostles' Creed, page 5

Hymn 149—"The Church's One Foundation"

The Sermon

The Offering and Offertory

The Anthem

Anniversary/Rededicatory Prayer

The Lord's Prayer

The Benediction

Hymn 550—"Lead On, O King Eternal"

Postlude

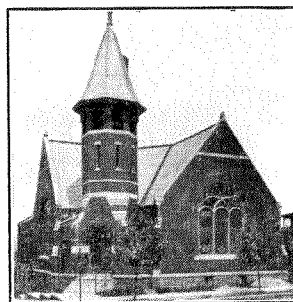
TRUSTEES SINCE JOINTURE BEGAN (69-75)

*Wayne Kaufman	1970	*Jo-Anne Young	1970
*Lewis Harter	1970	*Lois Burger	1970
*Dorothy Moyer	1970	*Charles Robbins, Jr.	1970
*William Coward	1970	John Denchak	1972
*Stanley Klinger	1970	George Kaufman	1972
*Charles Wagner	1970	Jacob Bingamen	1973
*Malcolm Boyer	1970	David Neidig	1973
*June Kaufman	1970	Edna Kaufman	1974
*Elizabeth Hubler	1970	Charles Brain	1975

* Due to early records, all trustees from 1969 thru 1971 are listed under 1970.

75 YEARS OF ACTIVE SERVICE TO ST. PAUL'S

Mrs. Edna Haas 1900—Mrs. Guy Hubler 1901—Mrs. William Gable 1901



ST. PAUL'S 1920



INTERIOR OF CHURCH WITH GASLIGHTS



FIRST SUNDAY SCHOOL CLASS — 1876

SUNDAY CHURCH SCHOOL

As early as April 2, 1876, a Union Sabbath School had been organized in Gordon with 68 scholars and 7 teachers present. Wm. H. Anthony was elected Superintendent. As a true Lutheran pastor, Rev. W. G. Thrall felt that the church should have a Lutheran Sabbath School.

On January 22, 1911, the Fellowship Bible Class was formed with an average attendance of 8 or 10, which increased to 30 or 40 until it was one of the leading Bible Classes in this part of the state. Many enjoyed the picnics, meetings, etc. in the various homes, hikes and games and camping trips sponsored by this group. In September 1928 the Rev. A. C. Harris Junior Bible Class was organized. The class has received many inspirations from what has been taught them by their various teachers. They also put on some very excellent plays through the direction of Miss Elizabeth Hubler.

There was also an Intermediate Department and Primary Department with excellent and faithful teachers and officers through the years. Children's Day, Christmas and other church holidays, entertainment was put on by these groups.

Although Sunday School has been an important part of the church since Rev. Thrall organized the Lutheran Sunday School, July 24, 1887, it is very discouraging to note the sharp decline in attendance over the years. Classes are provided for all ages, so why don't you plan on attending. **WHY NOT MAKE IT A FAMILY AFFAIR!**

VACATION CHURCH SCHOOL

Every summer after all the public schools are finished, a special activity is held for the children of St. Paul's, this is known as Bible School. For two weeks, the children not only get taught about Christ and his wonderful teachings, but also get to do handycrafts which also serve our wonderful Lord.

All a child must do to enroll in this learning experience, is to be present during the first few days of this V.C.S.

The past few years the attendance has risen, as far as the children are concerned, but teacher's seem to be at a premium. The church does wish to send out an invitation to any available adults who would enjoy learning more about the teachings of Christ to sign up for the teaching of this Bible School.

"SUFFER THE LITTLE CHILDREN WHO COME UNTO ME"

POSTSCRIPT — The Vacation Church School of St. Paul's began in the summer of 1921 under the direction of Pastor Arthur Harris. The Church School is the oldest one in service throughout the region in continuous years of service.

THE SENIOR CHOIR

The Senior Choir though few in members, have been faithful in attendance at Church services and at rehearsals.

The objects of the Senior Choir are to have special music for the Service every Sunday, and also special music for special occasions. Any members of our congregation are welcomed to come and join us. It is gratifying to a choir, especially to one as small when it receives thanks and praises for their effort.

The Senior Choir is self sustaining through their sale of Birthday Calendars. (Although they have not been sold the past few years).

Some of our members have sung with the Congregational Choir, which we have enjoyed. The past year the choir has purchased new robes and crosses.

The Senior Choir rehearsals are held every Wednesday at 6:30 P.M. The choir space may seem small, but room will be made for anyone who wishes to join. The only qualification is the desire to sing to the Glory of God.

"Come let us sing unto the Lord, let us make a joyful noise to the rock of our salvation". Psalm 95.

Edna Kaufman, Pres.

POSTSCRIPT: The first choir was organized in 1880 with Mr. Fred Dreher as choirmaster. He remained in this capacity until 1911.

ST. PAUL'S LUTHER LEAGUE

The youth of St. Paul's organized under the name of Christian Endeavor. The name has since been changed to Luther League.

The Luther League of Christs' United consists of two groups; the Intermediate Luther League for the youth from ten years of age to Confirmation age, and Senior Luther League for the Confirmed youth.

Activities of the League include horseback riding, bowling, pizza parties, and recently a retreat and joint meeting with the Morristown, N.J. League at the Haunted Castle. The early fall is the time of year when the League has the Benevolence Hike, and the Advent season the League hosts one of the Congregation's Advent Night Services.

BROTHERHOOD (LCM)

The men's organization of St. Paul's had its beginnings in 1931 and was named the "Brotherhood". Its goals were to promote fellowship among members of the church, restore lapsed members, and assist in the care and promotion of the church property. The third Monday of each month was reserved for meetings of the group until the sixties when it disbanded because of lack of interest.

Some of the activities during the Brotherhood's active period were conducting Mothers' Day services and the annual banquet in January which were well attended. Members of the group performed a large number of paint and repair projects to keep the church and parsonage in good condition. Placing amecite in front of the church, laying linoleum in the kitchen, and painting the Sunday School rooms are but a few examples of their efforts.

In later years the Brotherhood adopted the name Lutheran Church Men and were quite active in District and Synod rallies and activities. Since the merger with neighboring Lutheran churches a few of the men of St. Paul's Chapel continue to enjoy the old-time fellowship in the LCM of Christ's United.

LUTHERAN CHURCH WOMEN

A group of 17 women assembled in the church social room for the purpose of organizing an L. C. W. on June 19, 1961 with Pastor Swavely presiding. The purpose of the group is to create fellowship of women within the church through prayer study, service and offerings.

It was decided to hold monthly meetings the third Monday of each month at 7:30 P.M. (This has been changed to the third Wednesday at 7:30 P.M.) Nine women attended the convention at Reinerton at which time our organization was reorganized.

Ever since this time the women have been working on many projects for various homes and hospitals, making quilts, bed pads, dressings, etc. to help alleviate suffering wherever possible. Favors are made to brighten the trays at homes and hospitals. Gifts are purchased for foster children of the Lutheran Childrens Bureau at Christmas time. The Christmas tree is made of decorations by the L. C. W. Also the Nativity scene was purchased by the L. C. W. Communion is set up by the group and at any dinners held in the church you can see the same familiar faces of the L. C. W.

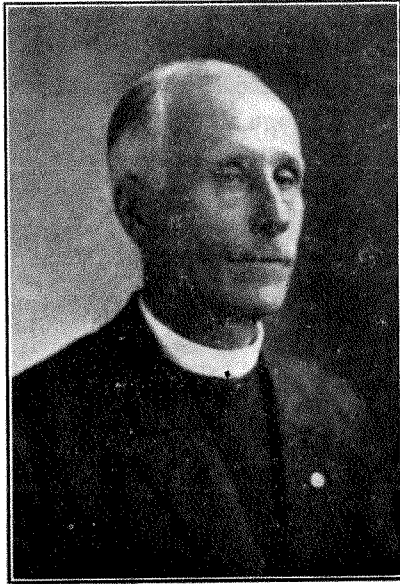
The present Memorial Fund is also a responsibility of these ladies. The L. C. W. seeks to interest women in serving Christ and the Church, and also to create friendship among the women of the church. All women of the congregation are potential members, so starting in September why don't YOU join us in fellowship, work, and service for the Master. SEE YOU THERE.

**PASTORS AND INTERNS WHO HAVE LED ST. PAUL'S
THROUGH 100 YEARS**

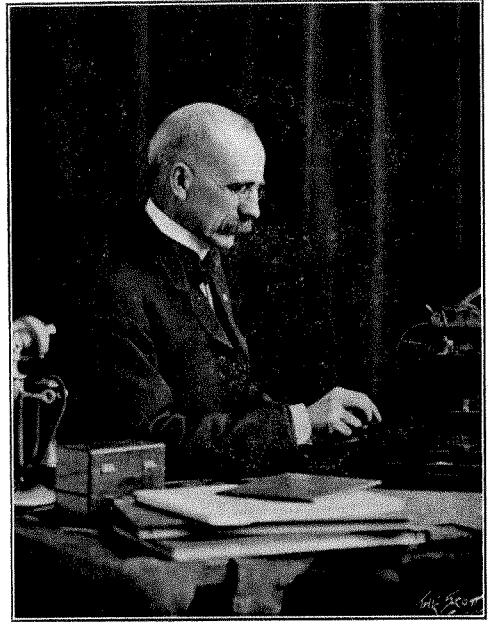
Rev. O. D. S. Marcley	1876-1878
Rev. D. E. Rupley	1878-1879
Rev. J. H. Weber, D.D.	1879-1886
Rev. W. G. Thrall	1886-1887
Rev. C. M. Sandt	1888-1891
Rev. A. R. Glaze	1891-1896
Rev. G. E. Hipsley	1896-1900
Rev. P. E. Bierbauer	1900-1905
Rev. E. E. Schantz	1904-1908
Rev. C. R. Myers	1908-1910
Rev. Paul Froellich	1910-1913
Rev. George Styer	1913-1917
Rev. G. W. Millar	1917-1921
Rev. A. C. Harris	1922-1951
Rev. James E. Ziegenfus	1951-1956
Rev. George F. Spieker	1957-1959
Rev. John A. Swavely	1960-1967
Rev. Robert Hughes	1967-1971
Rev. Donald Hendershedt	1969-1973
Rev. Charles Mertz	1972-
Rev. Mark Fritch	1973-

I N T E R N S

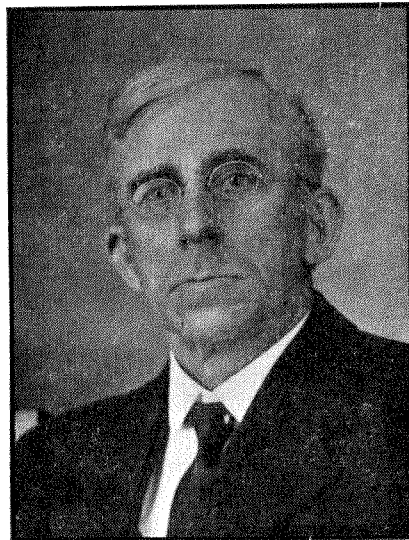
Donald Hendershedt
Grant Wickert
David Stroble
Robert Lutz
Robert Hoenich
Dennis Laskey
Kenneth Gould
Alfred Dobronz
Jimmy Lee Werley



Rev. D. E. Rupley
1878-1879



Rev. W. G. Thrall
1886-1887



Rev. A. R. Glaze
1891-1896



Rev. George E. Hipsley
1896-1900



Rev. P. E. Bierbauer
1900-1904



Rev. E. E. Schantz
1904-1908



Rev. C. R. Myers
1908-1910



Rev. Paul Froehlich
1910-1913



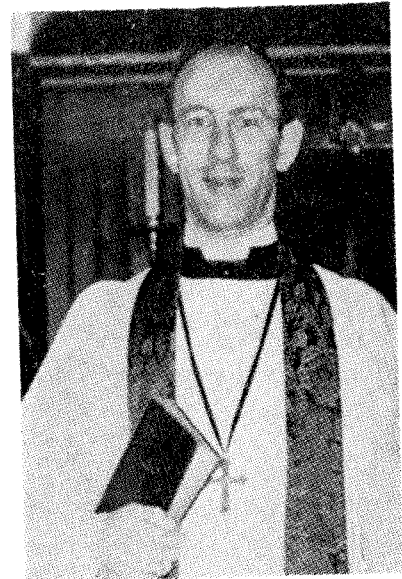
Rev. George Styer
1913-1917



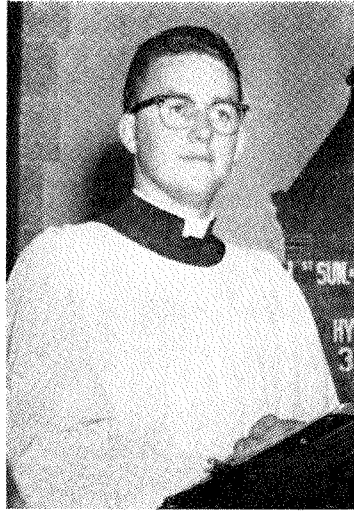
Rev. G. W. Millar
1917-1921



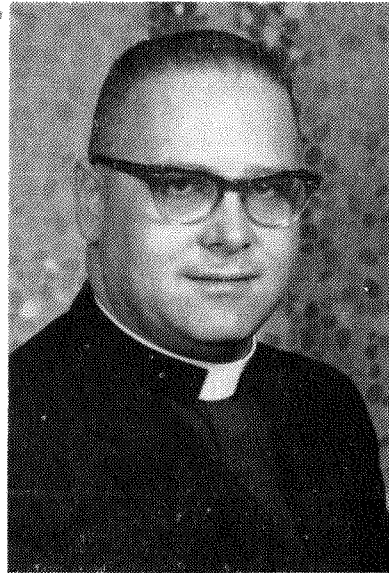
Rev. A. C. Harris
1922-1951



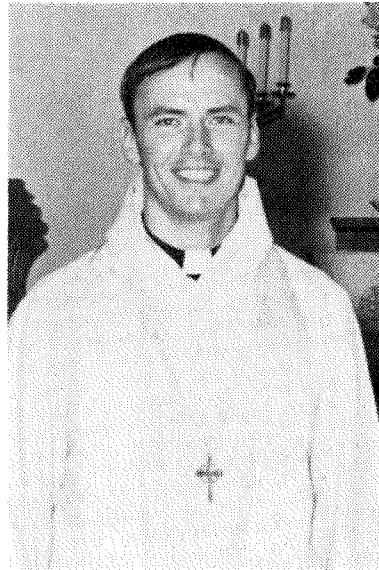
Rev. J. E. Ziegenfus
1951-1956



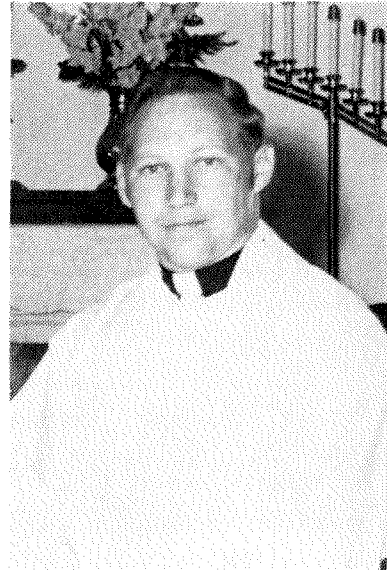
Rev. George Spieker
1957-1959



Rev. John A. Swavely
1960-1967



Rev. Robert Hughes
1967-1971



Rev. Donald Henderschedt
1969-1973

BIOGRAPHY OF REV. RALPH L. WAGNER

Rev. Wagner was baptized and confirmed by Rev. Charles R. Myers in St. Paul's Lutheran Church, Gordon. He is the son of the late Mr. and Mrs. William E. Wagner, of Gordon. He graduated from Gordon High School, Gettysburg Academy, Gettysburg College, and the Gettysburg Theological Seminary.

He has been pastor for many congregations among them: Lower Frankford Charge, Carlisle, Pa.; Central Lutheran Church, Phoenixville, Pa.; Holy Communion and St. Mark's, Yeagertown, Pa.; Grace Evangelical Lutheran Church, Philadelphia, Pa.

Rev. Wagner is now retired and lives at Milburn, N.J.

BIOGRAPHY OF REV. ADAM P. BINGAMAN

He was born on December 14, 1906 in Urban, Pa. He was baptized and confirmed in Immanuel Lutheran Church, Hunter Station, Pa. He transferred membership to St. Paul's Lutheran Church, Gordon, Pa. He is the son of the late Mr. and Mrs. Joseph Bingaman, of Gordon.

He graduated from Treverton High School and Mahanoy City High School; Susquehanna University, and the Susquehanna Seminary, Selinsgrove, Pa. He served only one congregation, St. John's Lutheran Church, Montgomery, Pa., R. D. 1. During his pastorate he was very active in the District and Synod and also in community affairs. Rev. Bingaman died in 1972 just before his retirement.



PICTURE OF INTERIOR OF CHURCH — 1926

THANK YOU

The editors of this booklet would like to thank the following people for their contributions:

ROBERT MARTZ
MARGARET WOLFE
MARIE KORN
KAREN WEIKEL
EDNA KAUFMAN
JUNE KAUFMAN
MALCOLM BOYER
ELEANOR BOYER
THE PASTORS

WAYNE KAUFMAN
DAVID NEIDIG

ANNIVERSARY COMMITTEE

Barbara Leim, Chairman

Jake Bingamen
Elizabeth Hubler
Malcolm Boyer
Betty Boyer
Jo-Ann Young
Miriam Hubler

Dave Neidig
Rose Payne
Janet Moyer
Robert Martz
Karen Weikel
Wayne Kaufman

PRESENT PASTORS, COUNCIL MEMBERS, TRUSTEES

P A S T O R S

Charles E. Mertz
Mark A. Fritch
Jimmy Lee Werley (Intern)

C O U N C I L

Jacob Bingamen
Elizabeth Hubler
John Denchak
John Mertz

T R U S T E E S

David Neidig, Secretary
Malcolm Boyer
Edna Kaufman
Stanley Klinger
Jacob Bingamen, Chairman
Marie Korn
June Kaufman
Charles Brain
Jo-Anne Young, Treasurer